

# DIRECTIONS

## DRIVING DIRECTIONS

**From Philadelphia/Southern New Jersey:** Take I-95 North, staying in the right lane when going over the bridge into NJ. Take the first exit after going over bridge (Route 29 Lambertville/Trenton) and follow Rt. 29 North for 10 miles. Make a left onto Bridge Street (Route 179) in Lambertville. The Inn at Lambertville Station will be on the left just before the bridge to New Hope, PA.

**From Northern New Jersey:** Take Route 202 South, and take the last exit before the toll bridge to PA (Route 29 Lambertville). Bear left onto Rt. 29, continue to first light, then turn right onto Bridge Street (Rt. 179). The Inn at Lambertville Station is on the left just before the bridge to New Hope, PA.

**From Points West:** Take the PA Turnpike (I-276) East to Exit 28, Route 1 North. Take Route 1 North to I-95 North. From here, follow directions above for Philadelphia/Southern New Jersey.

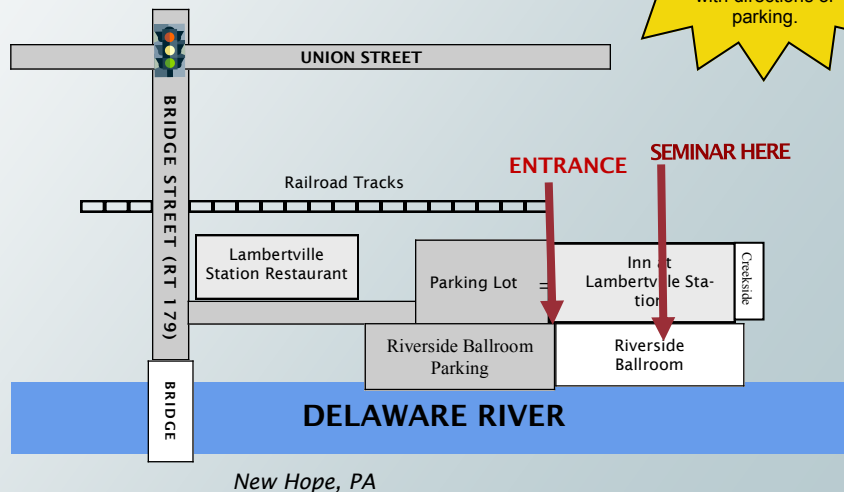
**From Points East:** Take Route 195 West past the New Jersey Turnpike entrance. Route 195 West will become Route 29 North. Follow Route 29 North for approximately 18 miles (when you pass the I-95 entrance you're about halfway there). Make a left onto Bridge Street (Route 179) in Lambertville. The Inn at Lambertville Station will be on the left just before the bridge to New Hope, PA.

## PARKING INSTRUCTIONS

Parking is available at the seminar facility, free of charge. If there is a parking lot attendant present, inform them you are attending the FLS seminar and they will waive any parking fee.

### LOST OR RUNNING LATE?

Contact us at  
(215) 862-7280 the day  
of the seminar for assistance  
with directions or  
parking.



# SEMINAR

Please join us as Theodore Schaer, Esquire  
and Paul Schmidt, Esquire of Zarwin, Baum, DeVito,  
Kaplan, Schaer, Toddy, P.C. to discuss accident  
response best practices.

## Catastrophic Emergency Response



Friday, September 23, 2016

The Inn at Lambertville Station  
Lambertville, New Jersey



**FUNDAMENTAL**  
LABOR STRATEGIES, INC.®  
DRIVERS, COMPLIANCE, MANAGEMENT AND RESEARCH



[www.FundamentalLabor.com](http://www.FundamentalLabor.com)

# Catastrophic Emergency Response

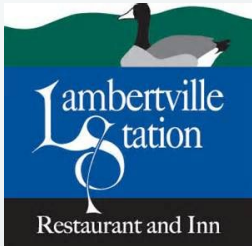
## SEMINAR DETAILS

**Presenters:** Theodore Schaer, Esquire and Paul Schmidt, Esquire of Zarwin, Baum, DeVito, Kaplan, Schaer, Toddy, P.C.

**Date:** Friday, September 23, 2016  
8:30AM - 1:00PM (**Speakers begin at 9:30AM**)

**Location:** The Inn at Lambertville Station  
The Riverside Ballroom  
1 Bridge Street  
Lambertville, NJ 08530  
[www.lambertvillestation.com](http://www.lambertvillestation.com)

**Meals:** Light breakfast at 8:30AM  
Buffet Lunch at 12:00PM



**RSVP BY SEPTEMBER 16, 2016**

**E-mail:** [seminars@fundamentallabor.com](mailto:seminars@fundamentallabor.com)

**Phone:** (215) 862-7280, Jennifer Hudson x822



## ABOUT THE SPEAKERS

Theodore M. Schaer is regularly hired by some of the nation's largest insurers, third party administrators, motor carriers and businesses to defend lawsuits. Since 1987, Ted has routinely defended general liability, transportation retail, strict liability, and professional liability claims. He serves as National and Regional Counsel to several national accounts.

Paul M. Schmidt chairs the Zarwin Baum Environmental and Energy Practice Group. He provides legal services to a wide range of clients in Pennsylvania, New Jersey and across the country. He also represents clients on permitting and compliance issues in industrial operations, including waste, water quality, air, oil site cleanup and gas drilling, pipelines, CNG stations, storage tanks and radiation.

## ABOUT THE SEMINAR

Hear from experts on how to minimize losses, determine exposure, and quickly resolve catastrophic transportation and environmental accidents.

- Putting the right emergency response team in place
- Securing the site
- Minimizing secondary damages
- Collecting and preserving information
- Handling media and workplace communications
- Dealing with regulatory agencies

## ABOUT FLS

For over twenty five years, Fundamental Labor Strategies, Inc.® (FLS) has built and maintained mutually beneficial relationships with CDL truck drivers and the companies that utilize them. Learn more about our extra, replacement, and fully dedicated outsourced drivers and DOT compliance products at [www.FundamentalLabor.com](http://www.FundamentalLabor.com).